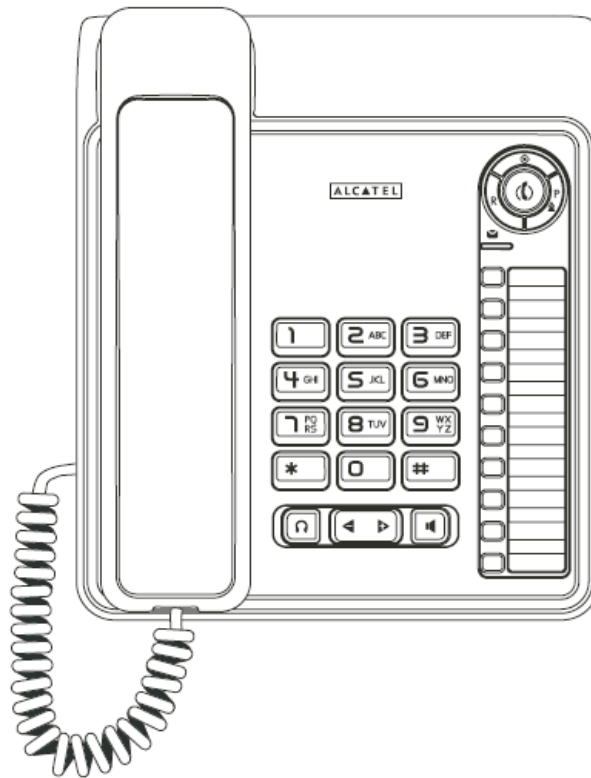




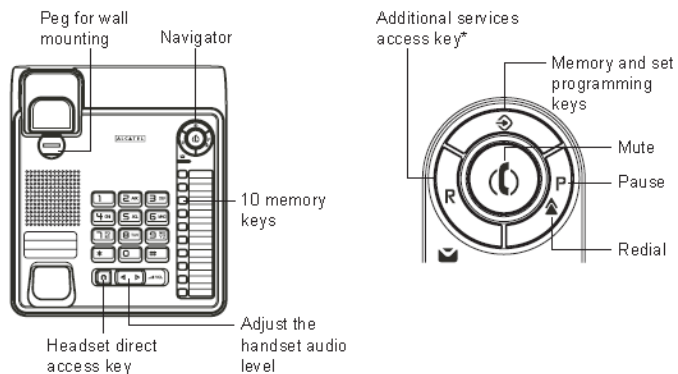
## TEMPORIS™ 300 / TEMPORIS™ 350



# User Guide

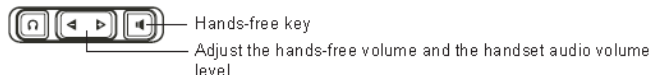
Telephonics Limited

PH 06 3570900 | Fax 06 3570901 | Web: [www.telephonics.co.nz](http://www.telephonics.co.nz)



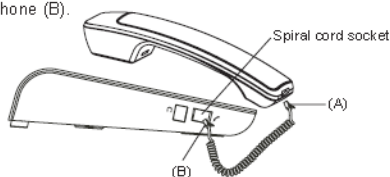
\* If the service is technically available and you subscribe for it with the operator.

Only on **Temporis 350** :



## 1. SETUP

- Plug one end of the spiral cord into the handset at (A), and the other end into the socket on the left side of the phone (B).



- Plug the telephone cord into the socket on the back of the set and into the wall socket.

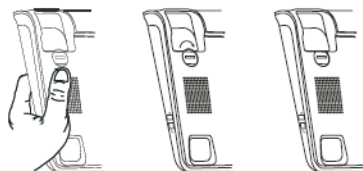


**NOTE:** The spare socket enables a modem to be connected.

- Affix the emergency number label in the appropriate place.

## 2. WALL MOUNTING

- Turn over the wall mounting peg (small grooved plastic part) on the base using a coin.
- Drill two 6 mm holes 70 mm apart.
- Fit two wall plugs and screw in wood screws\* (3.5 mm in diameter and 30 mm long).
- Mount the base on the 2 screws by pulling it downwards.



## 3. GENERAL USE

### 3.1 RINGER LAMP / MESSAGE WAITING LAMP



This light flashes in time with the ringer when you receive a call. It goes out as soon as you take the line.



If you are connected to an ALCATEL PABX with a voicemail service, the message waiting lamp tells you there is a message in your mailbox.

There are two different ways of dialling:

- by lifting the handset, then dialling.
- by dialling in on-hook mode.

### 3.2 DIALLING IN ON-HOOK MODE (ONLY ON TEMPORIS 350)



Press the hands-free key then dial your correspondent's number. Pick up the handset to talk.

### 3.3 HANDS-FREE MODE (ONLY ON TEMPORIS 350)

If you are talking to somebody on the handset, and you want to hear and talk to them over the loudspeaker instead:

- Press and replace the handset.
  - ▶ The people around you can join in the conversation.
- Adjust the volume using the and keys.
- Lift the handset to return to private conversation mode.

### 3.4 HANDSET VOLUME CONTROL

When the hands-free function is off, you can increase the handset volume.

- Press the key.
- To return to the initial volume, press the key.

### 3.5 MUTE



The Mute key puts your correspondent on hold so that you can talk to someone else without the first person hearing.



1 beep is emitted on the line every 10 seconds.

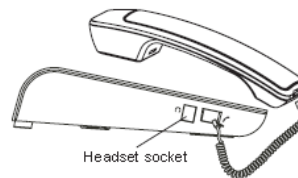


To resume the conversation, press the Mute key again.

## 4. CONNECTING AND USING AN ADDITIONAL HEADSET\*\*

### Connection

- Plug the RJ9 headset cord into the socket on the base of the telephone.



### Headset mode

Once the headset is plugged in:

- To take an incoming call:
  - ▶ Press the key. It will be backlit in blue.
  - ▶ At the end of the conversation, press again to end the call.
- To place a call:
  - ▶ Press the key and then dial the number or press one of the direct memories.
 At any time, you may continue the conversation:
  - ▶ In hands-free mode: Press (only on Temporis 350) and remove the headset to hear.
  - ▶ On the handset: Pick up the handset and remove the headset to hear.

## 5. USING THE MEMORIES

**NOTE:** In programming mode, your **Temporis** communicates with you by emitting a number of beeps.

- 1 beep: every key press is acknowledged by a beep.
  - 2 beeps: programming correct.
  - 3 beeps: programming error. Start again from the beginning.
- Your telephone set can store 10 numbers of up to 24 digits.

### 5.1 PROGRAMMING THE MEMORIES

#### Programming without calling

- Pick up the handset.
- Press the Programming key.
- Enter the number.
- Press one of the ten memory keys.

#### Programming while calling

- Pick up the handset.
- Dial the number.
- Press the Programming key, whether you are already in conversation or not.
- Press one of the ten memory keys.

### 5.2 MEMORY DIALLING

- Pick up the handset.
- Press one of the ten memory keys. The stored number is dialled automatically.

### 5.3 ERASING A MEMORY

- Pick up the handset.
- Press the Programming key **twice**.
- Press the key corresponding to the memory to be erased.

## 6. SELECTING AND ADJUSTING THE RINGTONE

- You have a choice of four ringtones. You can adjust the volume when the phone rings or by going into Programming mode.

### 6.1 WHEN A CALL COMES IN

You can change the ringtone **as the phone is ringing**.

- Press **1, 2, 3** or **4** to select a ringtone.
- Your modifications are memorized, and you can answer the call.

### 6.2 IN PROGRAMMING MODE

To go into programming mode:

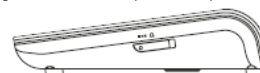
- Press and hold keys **1** and **3** simultaneously.
- Pick up the handset.
- Release the keys.
- Access to programming mode is confirmed by 1 beep.

To adjust the ringtone:

- Press the Programming key then key **1** (current melody is heard).
- To change the ringtone, press a key from **1** to **4**.

To adjust the ringing volume:

Use the ringing volume switch (): low () / mid () / high ().



## 7. LOCKING THE TELEPHONE

Using a 4-digit password, you can:

- block access to the ringtone volume control.
- block access to the configuration for professional use.
- block calls to phone numbers with more than 6 digits.

The initial password is 0000.

## 7.1 ACCESSING THE PROGRAMMING MODE

For each of the 3 operations, you need to go into Programming mode first.



- Press and hold keys **4** and **6** simultaneously.

- Pick up the handset.
- Release the keys.

## 7.2 LOCK / UNLOCK

Go into Programming mode again (see § 7.1) and then:

- Press the Programming key followed by **1**.

### Lock



- Press the key.
- Replace the handset.

### Unlock



- Press the key.
- Enter the password.
- Replace the handset.

## 7.3 MODIFYING THE PASSWORD

Go into Programming mode again (see § 7.1) and then:

- Press the Programming key followed by **2**.
- Enter the current password. 2 beeps are emitted.
- Enter the new 4-digit password. 2 beeps are emitted.
- Enter it a second time. 2 beeps are emitted.
- Replace the handset.

## 7.4 IF YOU FORGET THE PASSWORD

Go into Programming mode again (see § 7.1) and then:

- Press the Programming key followed by **0**.
- Press the key.
- 2 beeps are emitted.
- Replace the handset.

This operation clears ALL the settings, EXCEPT the memories.  
The password is reset to 0000.